

Penang Hill Biosphere Reserve

On 15 September 2021, Penang Hill Biosphere Reserve (PHBR) consisting of Penang Hill as central park, six permanent forest reserves, two dams and several water catchment areas are designated as a UNESCO Biosphere Reserve under Man and the Biosphere (MAB) programme after years of research and interdisciplinary collaboration between the State and Federal government agencies, Penang Hill Corporation, private sector, academic and local agencies.

A Multi-Sensational Experience At The Peak Of Penang

Welcome to Penang Hill - the peak of Penang Island offering many activities and attractions all year round.

Discovered and established by the British in the late 1700s, Penang Hill is one of the oldest colonial hills in Southeast Asia.

1700s

The earliest mode of transport up to the hill was by Sumatran pony or sedan chair attached to a pair of bamboo carrying poles (called a "doolie") hand carried by 4 to 8 porters.

1800s

Penang Hill is a repository of bungalows featuring a fusion of British colonial and modern Asian architecture dating back to the early days of the British settlement and the 1800s in Penang. The oldest building, Convalescent Bungalow was built in 1803. Since then, many other opulent bungalows were built such as Bel Retiro, Richmond and Fernhill Bungalow which remain standing today.

1900s

The Penang Hill Funicular Railway was the second mode of transport constructed in 1901 and completed in 1905. However, it was rendered ineffective, due to technical faults. A second railway was commissioned in 1909, and works for the second line started in 1914 with a budget of 1.5 million Straits Dollars. On 1st January 1924, the 2,007 meters long funicular railway was officially opened by then Governor of Straits Settlement, Sir L.N. Guillemard. The last upgrade was in 1977, before a complete overhaul of the system in 2010.

2011

The current 3rd generation system was commissioned in 2011; it plies the 1,996 metre track in approximately 5 minutes, making it the fastest, steepest and longest funicular in the region.



Ticketing Counter

Daily : 6.15 am - 9.15 pm

Train Schedule

Daily : 6.30 am - 11.00 pm
(Departure time every 30 minutes)

Travel Duration : 5 minutes - 15 minutes
(Non-stop) (Substation stop*)

*Trains stop at substations every half-hour except during peak season

Train Fare

Kindly visit www.penanghill.gov.my for latest train fares.



How to get here?

- Taxi / Car (Waze / Google Maps : Penang Hill Lower Station)
- Rapid Bus - 204 (From Jetty / Komtar to Bukit Bendera)
- Hop-On Hop-Off bus - City Route (Stop Number 03):
9.00 am - 8.00 pm (20-30 minutes interval)

Upload fond memories of your trip and hashtag #mypenanghill on our social media pages!

For more information, please contact us at:

PERBADANAN BUKIT BENDERA PULAU PINANG

Jalan Stesen Bukit Bendera, 11500 Air Itam, Pulau Pinang.

Tel: 04-828 8880 / 828 8861 Fax: 04-828 8868 Email: inquiries@penanghill.gov.my

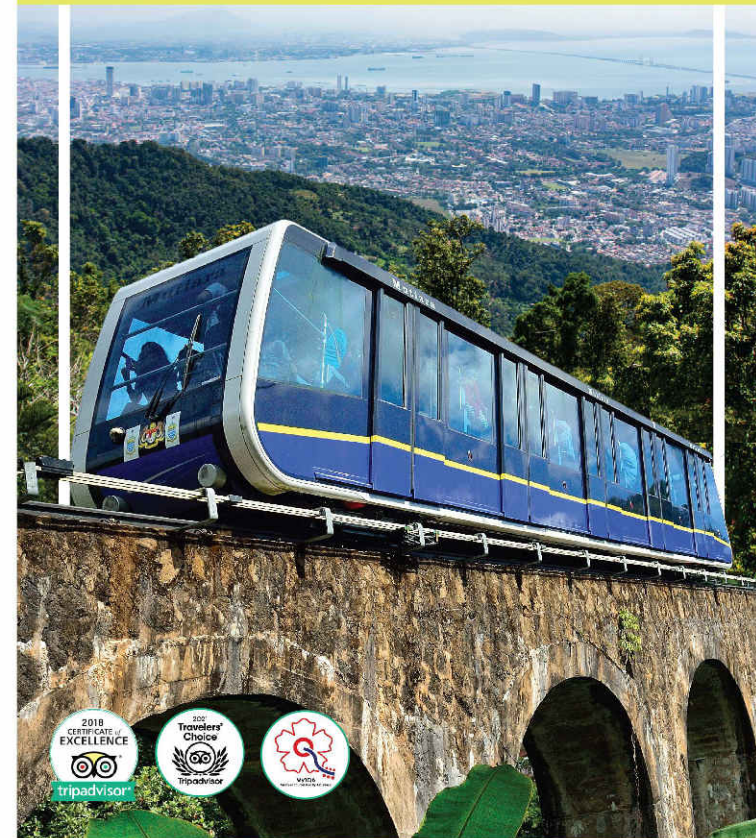
(Office Hour only: Monday - Friday, 8.00am - 5.00pm)

Penang Hill

The Hill Resort of Choice in Malaysia

Penang Hill Biosphere Reserve:

Malaysia's Latest on UNESCO Conservation List



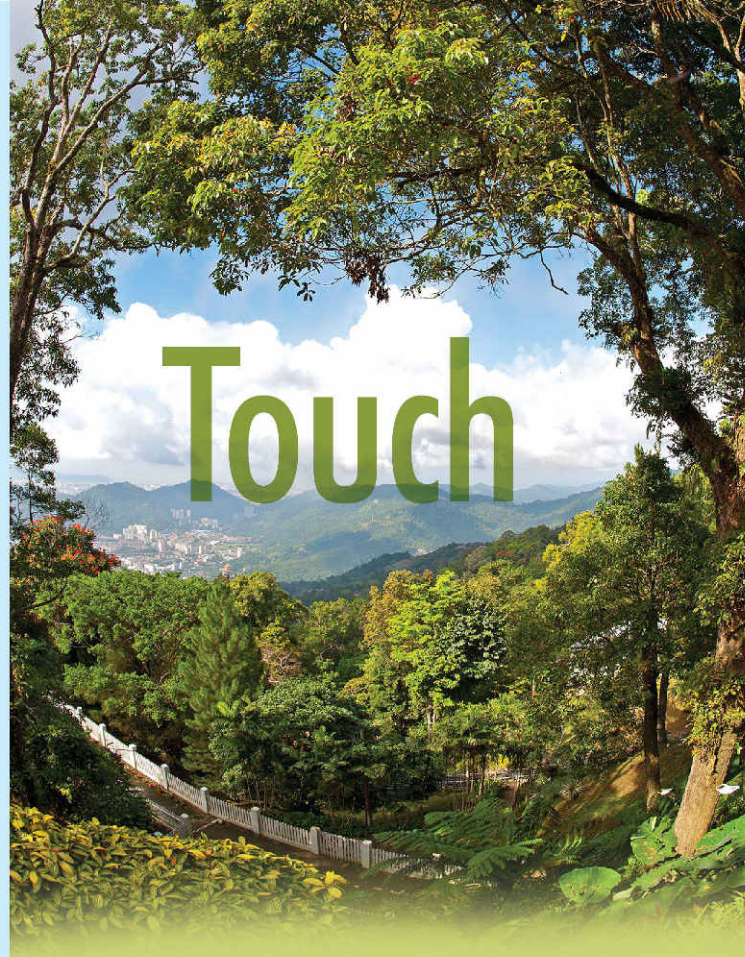


Rise early and catch the first train up the hill and you will be rewarded with a magnificent glimpse of the sunrise on clear days or feel the cotton-like mist floating in the air on cooler days.

With a total of 6 peaks and the highest standing impressively at 833 meters (2,732 ft) above sea level, Penang Hill offers the best look-outs in Penang. Enjoy a spectacular 180° view of George Town from the SkyWalk and SkyDeck as you bask amidst the breezy atmosphere.

As dusk sets in, watch George Town light up, providing a magical ambience against the evening sky. At Penang Hill, it is always an unforgettable, refreshing and enriching experience. And if you wish to linger around the hill till late, the last train down is at 10pm.

See



Touch



Apart from the fantastic view, immerse yourself in the lush greenery as you take a leisurely pace along the trails. As flora and fauna thrive in abundance all over the hill, discover exotic plants such as the Monkey Cup and Slipper Orchid, some of the most sought after plants in the world.

Explore the undulating greens as nature greets you along the nature walk trails. From neatly paved paths to adventurous bypaths, there's so much more to discover at Penang Hill!

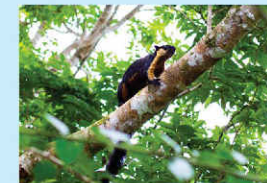


Escape the hustle and bustle of the city and rejuvenate in the cool temperature ranging from 18°C to 26°C. The serenity at the peak will melt away your stress, keeping you calm and relaxed as you breathe in the pristine oxygen-rich air.



Spot the cute Dusky Leaf Monkey with its trademark "spectacles"

Marvel at the heritage ambience of picturesque antiquated pre-war colonial-style bungalows and buildings nestled among embracing trees. Feel the surreal charms and sensation of the European countryside in the lush rainforest like no other.



The Giant Black Squirrel is one of the largest squirrels in the world.

On your lucky day, spot some of the rare animals such as the Dusky Leaf Monkey, Black Giant Squirrel and Greater Racket-Tailed Drongo in the tropical rainforest of Penang Hill. They can be spotted occasionally during mid-mornings and late afternoons.

Feel



Welcome to Malaysia's Newest UNESCO Biosphere Reserve

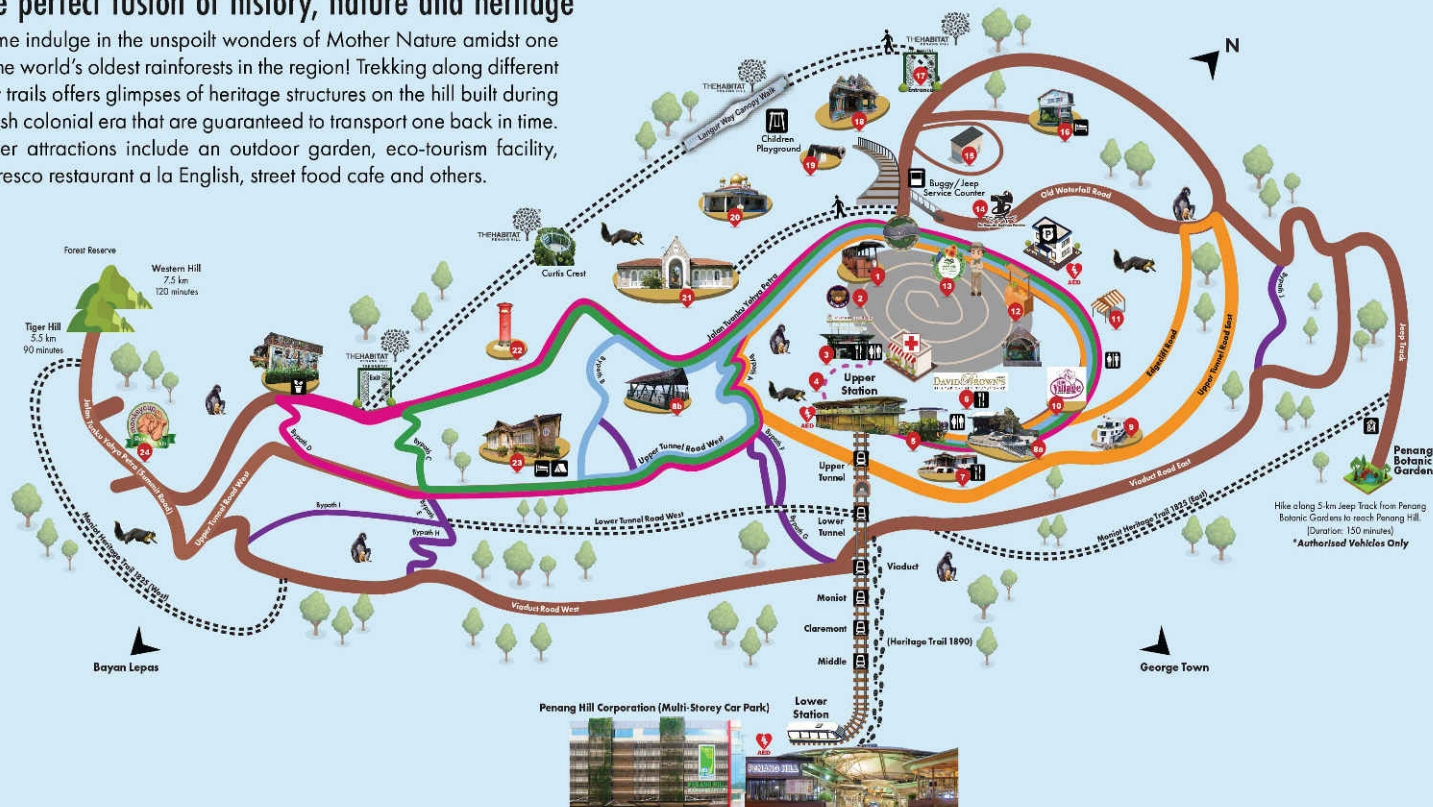
Penang Hill - Malaysia's Hill Resort of Choice

The perfect fusion of history, nature and heritage

Come indulge in the unspoiled wonders of Mother Nature amidst one of the world's oldest rainforests in the region! Trekking along different foot trails offers glimpses of heritage structures on the hill built during British colonial era that are guaranteed to transport one back in time. Other attractions include an outdoor garden, eco-tourism facility, al-fresco restaurant a la English, street food cafe and others.



Hi! Scan me to view/download digital version of Visitor's Guide on mobile phone.



* Map is not to scale

1 FIRST GENERATION TRAIN COACH

5 Minutes

Admire the distinctive beauty of the wooden replica of the train coach which operated from 1923 to 1977!



2 TEDDYVILLE MUSEUM

Entrance Fee Applies
5 Minutes

Come and explore our cute world of fun fluffy furry friends.



3 ASTAKA (CLIFF CAFE)

5 Minutes

A food and beverage eatery offering a wide variety of local food, drinks, desserts and souvenir stalls.



4 EL WALK

2 Minutes

Enjoy scenic view of the lush valley while strolling across this shaded, elevated walkway from the Upper Station leading to Astaka aka Cliff Café.



5 SKYWALK

10 Minutes

This 360° observation deck offers breathtaking views of George Town, the mainland and both the iconic bridges of the Pearl of the Orient.



6 DAVID BROWN'S RESTAURANT

5 Minutes

This highest restaurant in Penang promises to awe guests with tantalising menu and spectacular views.



7 KOTA DINE & COFFEE AND THE LOAF RAILWAY CAFE

12 Minutes

Dine and unwind in this grand heritage bungalow-turned-gallery will allow one to time travel and be immersed in Penang Hill's stories.



8a SKYDECK (EAST)

10 Minutes

Beautifully landscaped vantage points allowing one to bask in stunning sceneries.



8 PENANG HILL GALLERY@EDGECLIFF

Entrance Fee Applies
15 Minutes

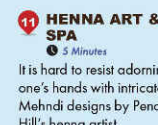
This impressive Art Deco-style bungalow-turned-gallery will allow one to time travel and be immersed in Penang Hill's stories.



10 LITTLE VILLAGE

Entrance Fee Applies
8 Minutes

This is where the Love Arch, Dwarf Village, Rabbit Garden and green surroundings are located.



12 PENANG HILL KACANG PUTIH

5 Minutes

A pushcart with assorted crunchy snacks with family-secret blend of spices passed down for more than 4 generations.



13 NATUREWALKS

5 Minutes

Especially for avid hikers and explorers who are keen to learn more about the oldest hill station in Peninsular Malaysia by voluntary guides.



14 EARTHQUAKE & TYPHOON PAVILION

Entrance Fee Applies
8 Minutes

Brace yourself for earthquake with magnitude intensity up to level 8 and up to level-12 typhoon.



15 TOY MUSEUM & 5D

Entrance Fee Applies
9 Minutes

A 2-in-1 attraction that is just right for children and to awake the inner child in us.



16 BELLEVUE HOTEL

15 Minutes

This historical property is revered for some of the best panoramic views of George Town. It is also famed for an aviary at the front that keeps exotic feathered breeds.



17 THE HABITAT PENANG HILL

Entrance Fee Applies
10 Minutes

Nestled on the edge of a virgin forest, this eco-tourism discovery centre offers unique rainforest experience, especially to nature lovers.



18 SRI ARULOLI THIRUMURUGAN TEMPLE

10 Minutes

Known as the Penang Hill Hindu Temple, it is among the oldest Hindu temples in Penang built in the 1800s and dedicated to the Hindu deity, Lord Murugan.



19 32-POUNDER CANNON

10 Minutes

Weighing 2,500kg, the majestic cannon was capable of firing a 32-pound cannon ball at a velocity of 1600 ft. per second!



20 PENANG HILL MOSQUE

12 Minutes

Masjid Bukit Bendera, with its minarets and domes, brings a touch of Islamic architecture to otherwise mostly colonial buildings of Penang Hill.



21 GATE HOUSE BEL RETIRO

12 Minutes

This historical structure built in 1789 for the governor of Penang features a classic façade and once welcomed royalties and prominent figures.



22 VICTORIAN POST BOX

10 Minutes

One of the oldest post boxes in Penang, its embossed VR insignia indicates its installation during the reign of Queen Victoria (1818-1901).



23 HILLSIDE RETREAT

30 Minutes

This heritage bungalow offers a cosy retreat surrounded by the tranquility of nature.



24 MONKEY CUP GARDEN

Entrance Fee Applies
30 Minutes

An outdoor garden featuring assorted pitcher plants from Malaysia and the neighbouring Indonesia.

